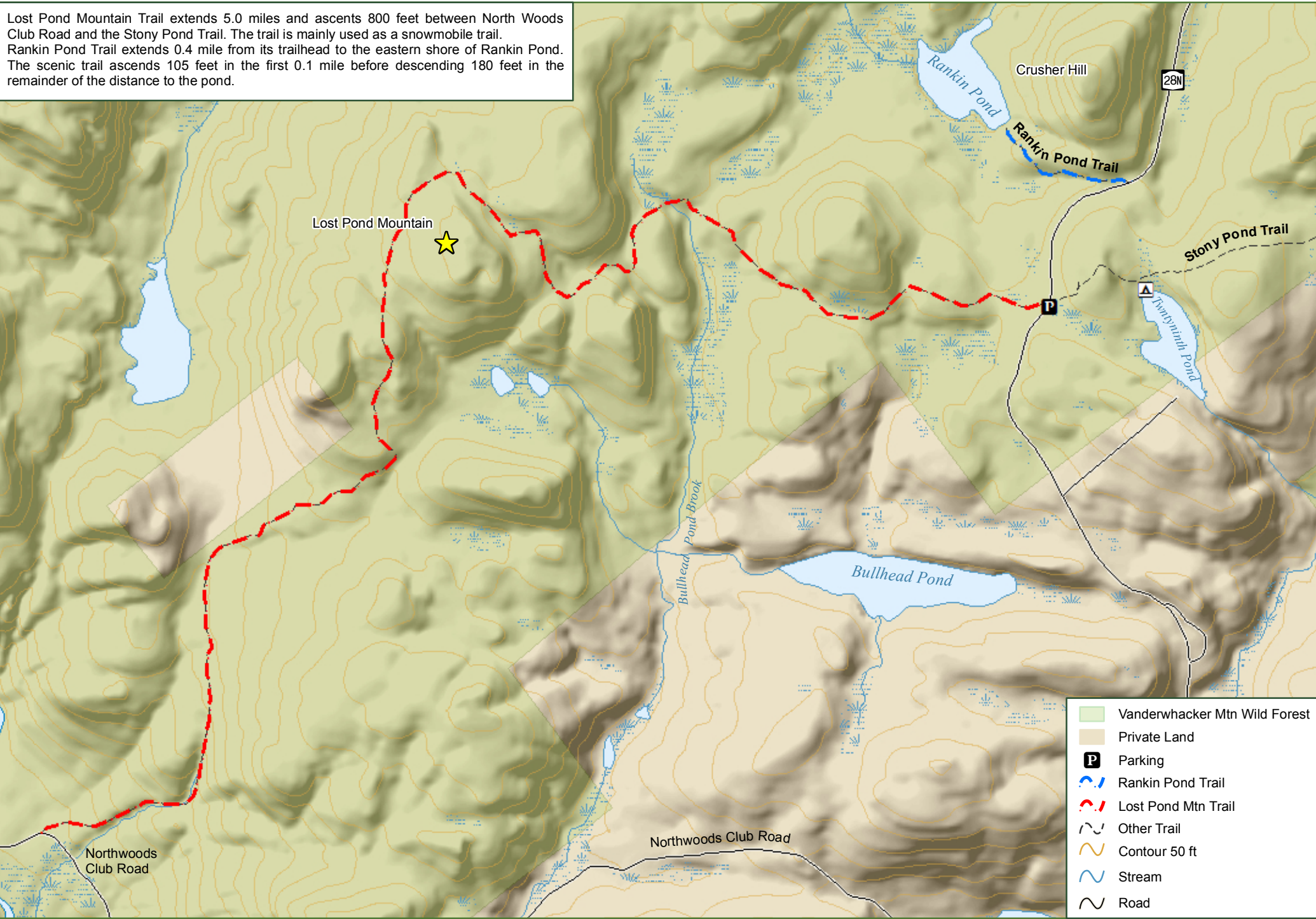


# Vanderwhacker Mtn Wild Forest - Lost Pond Mountain & Rankin Pond Trails

Lost Pond Mountain Trail extends 5.0 miles and ascents 800 feet between North Woods Club Road and the Stony Pond Trail. The trail is mainly used as a snowmobile trail. Rankin Pond Trail extends 0.4 mile from its trailhead to the eastern shore of Rankin Pond. The scenic trail ascends 105 feet in the first 0.1 mile before descending 180 feet in the remainder of the distance to the pond.



- Vanderwhacker Mtn Wild Forest
- Private Land
- P Parking
- Rankin Pond Trail
- Lost Pond Mtn Trail
- Other Trail
- Contour 50 ft
- Stream
- Road